

T20

Low profile load cell assembly for silo, tank and vessel weighing

capacities 2.5t to 30t



Stainless steel compression load sensor

Fully welded and hermetically sealed construction to IP68

Allows vessel expansion and contraction

Integral jacking facility

1000 division accuracy

Low profile, extremely compact loading assembly

Integral lift off prevention

Allowance for angular mis-alignment

5 year warranty

Durable and chemical resistant polyurethane cable

Vessel weighing problems solved simply and cost effectively. The T20 load cell is specifically designed as a reliable, simple, low cost solution for weighing of tanks, silos and vessels where level measurement is the main criteria.

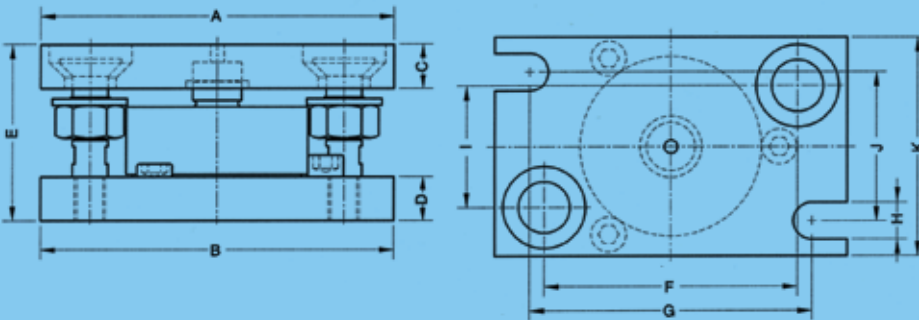
technical specification sheet

T20

| | Accuracy Class | Units |
|---------------------------------|--------------------|------------|
| Standard Load Ranges | 2.5, 5, 10, 20, 30 | t |
| Full Load Output | 2.0 +/- 0.1% | mV/V |
| Excitation Recommended | 10 | V |
| Excitation Maximum | 15 | V |
| Safe Service Load | 150 | % |
| Ultimate Load | 200 | % |
| Maximum Lift Off | 72 124 | kN |
| Maximum Side Load | 22 32 | kN |
| Maximum Side Offset | +/-3 +/-3.5 | mm |
| Combined Error | <+/- 0.05 | % |
| Repeatability | <+/- 0.015 | % |
| Output at Zero Load | +/- 2.0 | % |
| Input Resistance | 800 +/- 30 | Ω |
| Output Resistance | 700 +/- 5 | Ω |
| Operational Temperature Range | -30 to +70 | C |
| Compensated Temperature Range | -10 to +40 | C |
| Temperature Coefficient on Zero | <+/- 0.002 | %/C |
| Temperature Coefficient on Span | <+/- 0.0036 | %/C |
| Environmental Protection | IP68 | |
| Insulation | >5000 | M Ω |



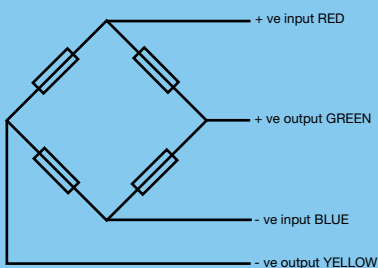
All percentages are related to Full Rated Load



| Range (t) | A,B | C,D | E | F | G | H | I | J | K |
|------------|-----|-----|-----|-----|-----|----|------|-----|-----|
| 2.5, 5, 10 | 160 | 20 | 80 | 115 | 128 | 17 | 55.5 | 68 | 100 |
| 20, 30 | 218 | 25 | 100 | 168 | 180 | 21 | 100 | 100 | 150 |

All dimensions in mm.

Electrical Connections



4 core screened polyurethane cable

Cable length 10m

Our policy is one of continuous product enhancement. We therefore reserve the right to incorporate technical modifications without prior notification.

Distributed by



Thames Side Sensors Ltd

Unit 10, io Trade Centre, Deacon Way,
Reading, Berkshire RG30 6AZ
tel: +44 (0) 118 941 1387
fax: +44 (0) 118 941 2004
e-mail: sales@thames-side.co.uk
web: www.thames-side.com